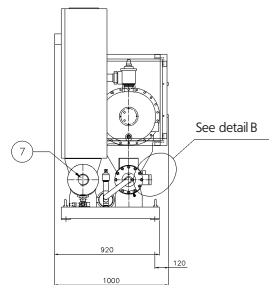
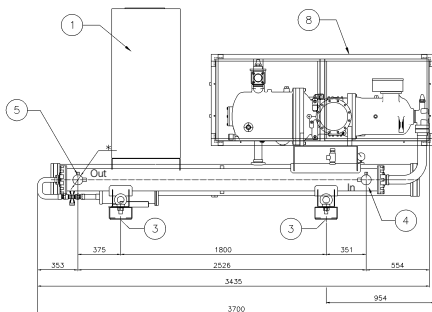
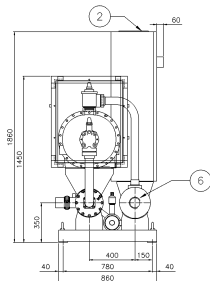
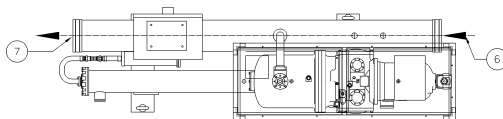


EWWD170-210DJYNN



Legend

- ① Electrical panel
- ② Power connections slot 150x260
- ③ 4 holes ϕ 25 for isolator mounting
- ④ Evaporator water inlet (ϕ * Victaulic connection)
- ⑤ Evaporator water outlet (ϕ * Victaulic connection)
- ⑥ Condenser water inlet connection
- ⑦ 5" gas connection condenser water inlet
- ⑧ 5" gas connection condenser water outlet

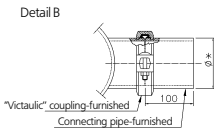
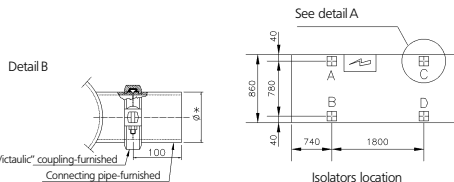


Optional in/out condenser connections

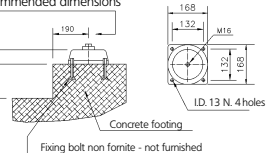
"victaulic"



Water inlet and outlet condenser connection can be reverse



Detail "A" rubber isolator
Recommended dimensions



Unit	Unit weight (kg)		Isolators load (kg)				Conn. in/out evap. ϕ *
	Shipping	Operating	A	B	C	D	
EWWD170DJYNN	1393	1470	130	170	520	650	88.9
EWWD210DJYNN	1410	1480	140	170	520	650	88.9
Rubber isolators			786011-w (2 Pz.)		786011-m (2 Pz.)		Type (Q/ty)