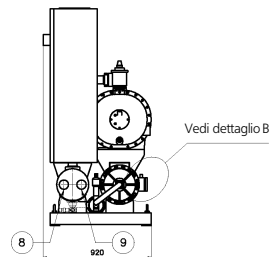
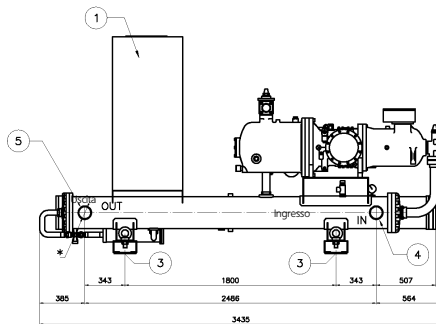
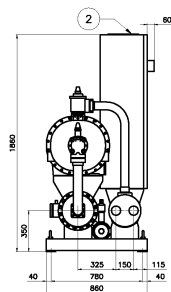
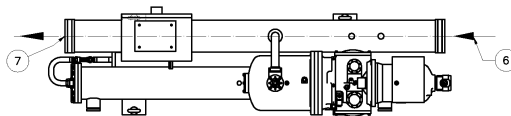


# EWWD230DJYNN/A

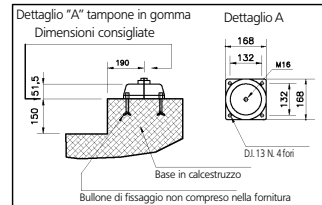
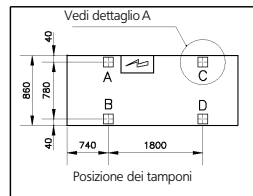
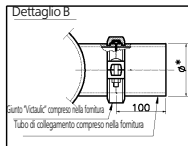
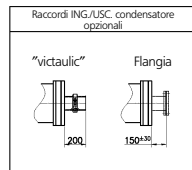


## Legenda

- ① Quadro elettrico
- ② Slot collegamenti elettrici 150x260
- ③ 4 fori  $\phi$  25 per montaggio tampone
- ④ Ingresso acqua evaporatore ( $\phi$ \* Giunto Victaulic)
- ⑤ Uscita acqua evaporatore ( $\phi$ \* Giunto Victaulic)
- ⑥ Attacco ingresso acqua condensatore e recupero di calore
- ⑦ Attacco uscita acqua condensatore e recupero di calore
- ⑧ Attacco acqua condensatore 4' gas
- ⑨ Attacco acqua recupero di calore 4' gas



Gli attacchi ingresso acqua e uscita condensatore/recupero di calore possono essere invertiti



Unità	Peso unità (kg)		Carico tamponi (kg)				Raccordo inq./usc. evap.
	Spedizione	In funzionamento	A	B	C	D	$\phi$ *
EWWD230DJYNN/A	1730	1905	265	255	655	735	114,3
Tamponi in gomma			786011-w (2 Pz.)		786011-h (2 Pz.)		Tipo (Qta)