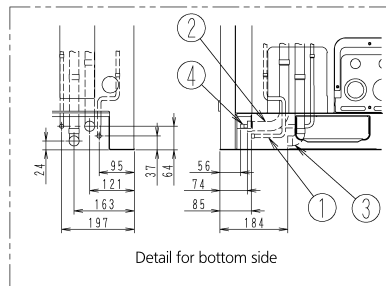
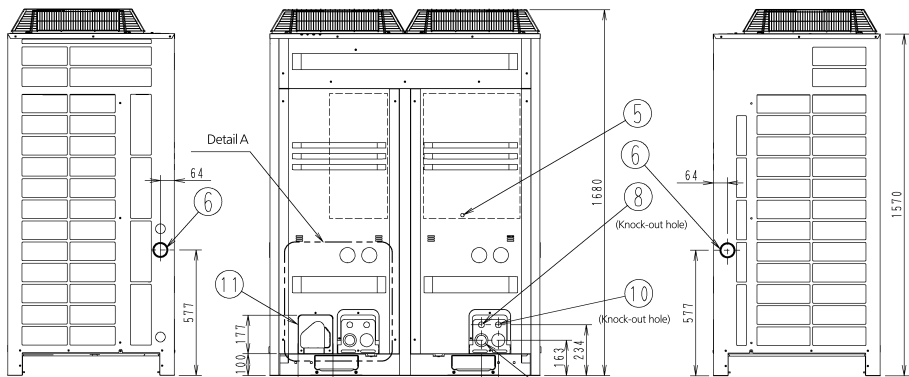
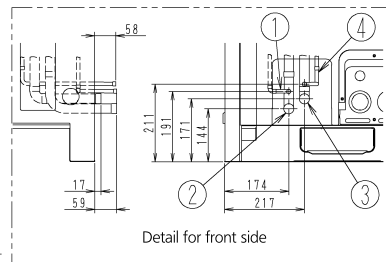
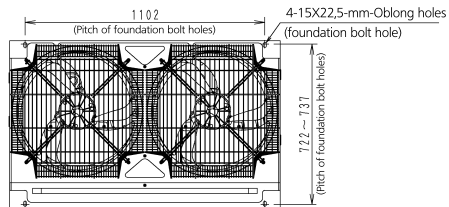


LRYEQ16AY



- 1 Liquid (For air conditioner) ϕ 9.5 Brazed connection
- 2 Gas (For air conditioner) ϕ 25.4 Brazed connection
- 3 Gas (For refrigeration) ϕ 25.4 Brazed connection
- 4 Liquid (For refrigeration) ϕ 9.5 Brazed connection
- 5 Grounding terminal inside of switch box (M8)
- 6 Power cord routing hole (side) ϕ 62
- 7 Power cord routing hole (front) ϕ 45
- 8 Power cord routing hole (front) ϕ 27
- 9 Power cord routing hole (bottom) ϕ 50
- 10 Wire routing hole (front) ϕ 27
- 11 Pipe routing hole (front)
- 12 Pipe routing hole (bottom)

