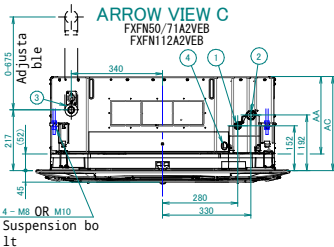
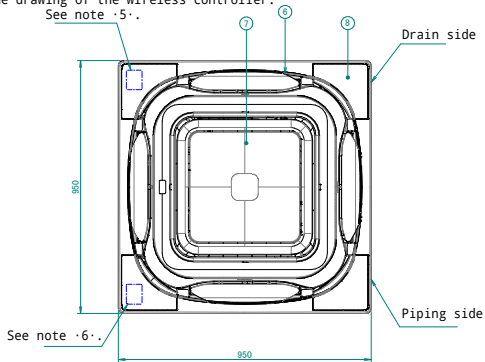
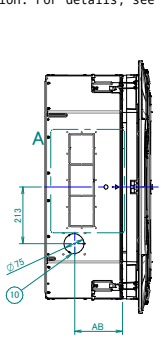
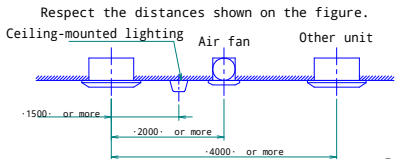
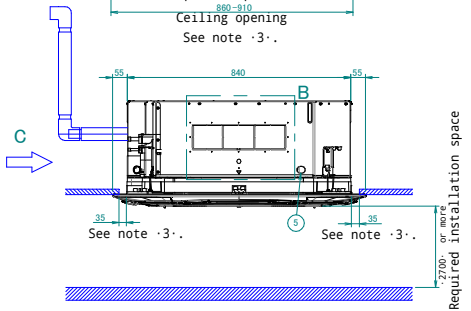
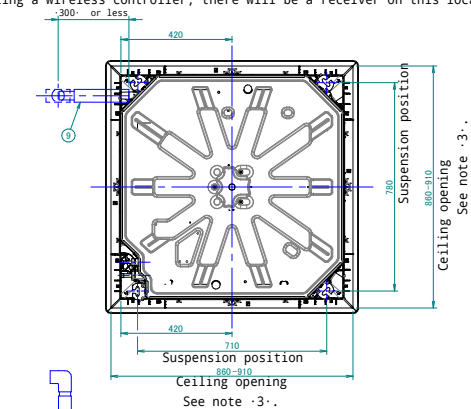


FXFN-A2

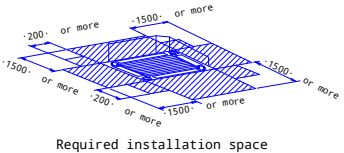
Notes

- 1.Location of nameplate
The unit nameplate is located on the control box cover.
- 2.The decoration panel nameplate is located on the piping-side panel frame, under the corner cover.
- 3.When installing optional accessories, refer to their respective documentation.
- 3.Make sure the distance between the ceiling and the cassette does not exceed ~35 mm.
- The maximum ceiling opening is ~910 mm.
- 4.When the conditions in the ceiling exceed 30°C ambient temperature and 80% relative humidity, or when fresh air is inducted into the ceiling, additional insulation is required (polyethylene foam, thickness ≥10 mm).
- 5.When installing a sensor kit, there will be a sensor on this location. For details, see the drawing of the sensor kit.
- 6.When installing a wireless controller, there will be a receiver on this location. For details, see the drawing of the wireless controller.

Cassette height		Minimal installation height	
AA	AB	AC	Model
246	180	311	FXFN50/71A2VEB
288	180	353	FXFN112A2VEB



- Item Name
- ① Liquid pipe connection port
 - ② Gas pipe connection port
 - ③ Drain pipe connection
 - ④ Power supply wiring intake
 - ⑤ Transmission wiring intake hole
 - ⑥ Air discharge outlet
 - ⑦ Flat grille assembly
 - ⑧ Corner decoration cover
 - ⑨ Drain hose
 - ⑩ Knockout hole.



If a discharge outlet is closed up with the "sealing member" option kit, then the required installation space on that (closed up) side is ~500 mm instead of ~1500 mm.

