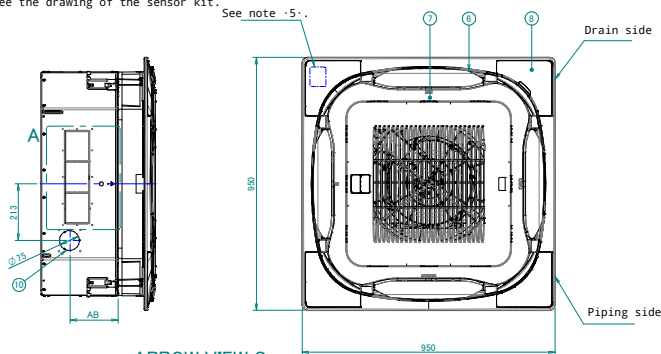
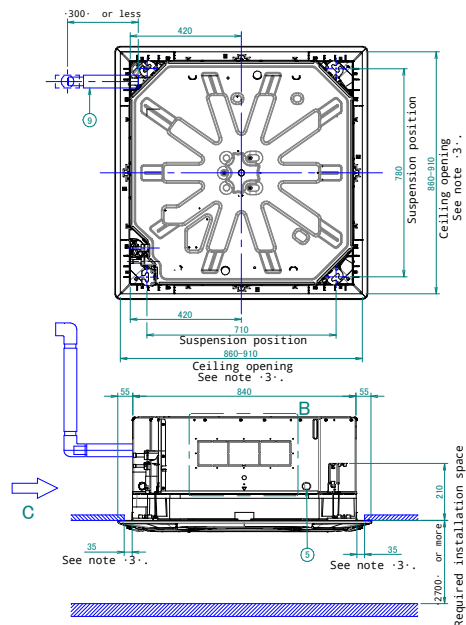


FXFN-A2

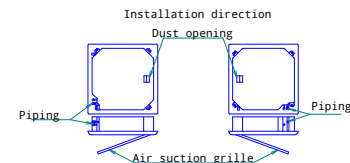
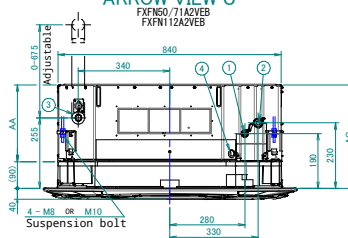
Notes

1. Location of nameplate
The unit nameplate is located on the control box cover.
2. The decoration panel nameplate is located on the piping-side panel frame, under the corner cover.
3. When installing optional accessories, refer to their respective documentation.
4. Make sure the distance between the ceiling and the cassette does not exceed 35 mm.
5. The maximum ceiling opening is 910 mm.
6. When the conditions in the ceiling exceed 30°C ambient temperature and 80% relative humidity, or when fresh air is induced into the ceiling, additional insulation is required (polyethylene foam, thickness ≥ 10 mm).
7. When installing a sensor kit, there will be a sensor on this location. For details, see the drawing of the sensor kit.

Cassette height		Minimal installation height	
AA	AB	AC	Model
246	180	349	FXFN50/71A2VEB
288	180	391	FXFN112A2VEB

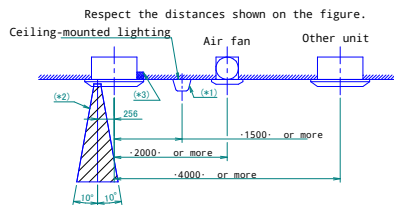
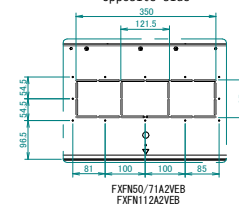


ARROW VIEW C



DETAIL B

2 places Opposite side



Required installation space
If a discharge outlet is closed up with the "sealing member" option kit, then the required installation space on that (closed up) side is 500 mm instead of 1500 mm.

Item	Name	Item	Name
①	Liquid pipe connection port	⑧	Air discharge outlet
②	Gas pipe connection port	⑨	Air suction grille
③	Drain pipe connection	⑩	Corner decoration cover
④	Power supply wiring intake	⑪	Drain hose
⑤	Transmission wiring intake hole	⑫	Knockout hole.

- (*)1 Not applicable to recessed lighting.
(*)2 Required space for entering with vacuum cleaner tube.
(*)3 Make sure the decoration panel discharge outlet is not blocked.

2D137307