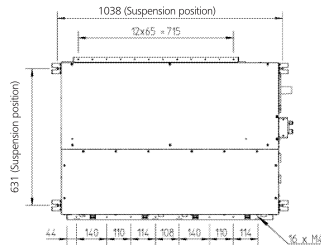
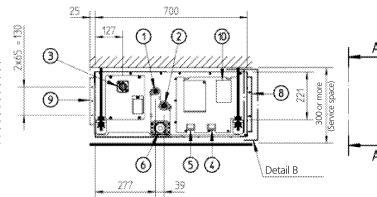
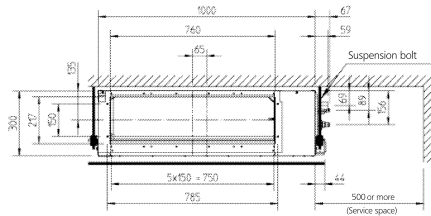
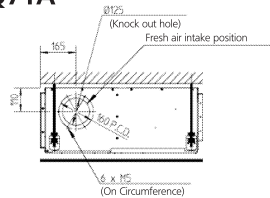
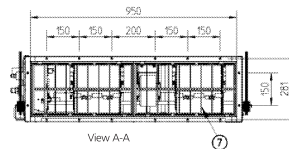


ADEQ71A



| | | |
|----|-------------------------------------|--------------------------|
| 1 | Liquid pipe connection | φ 9.52 flare connection |
| 2 | Gas pipe connection | φ 15.90 flare connection |
| 3 | Drain pipe connection | VP 25 (OD φ 32, ID φ 25) |
| 4 | Remote controller wiring connection | - |
| 5 | Power supply connection | - |
| 6 | Drain hole | VP 25 (OD φ 32, ID φ 25) |
| 7 | Air filter | - |
| 8 | Air suction side | - |
| 9 | Air discharge side | - |
| 10 | Nameplate | - |



- Note:
1. Refer to the outlook drawing of optional accessories when installing them.
 2. The required ceiling depth varies according to the configuration of the specific system.
 3. For maintenance of the air filter, it is necessary to provide a service access panel.