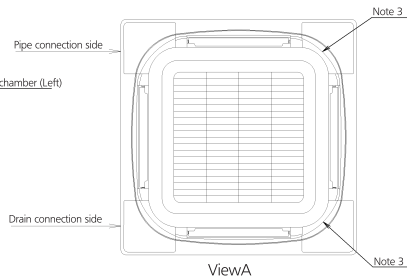
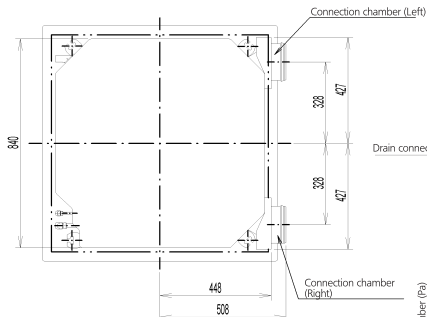
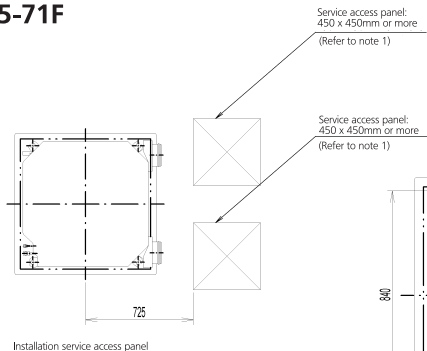


FCQG35-71F



Note:

- When installing this kit, inspection hatch is necessary. (it is necessary when servicing.)
Either one of inspection hatches must be installed.
- Field construction.
- The corner air outlet of this part must be shut
- In case of mounting a duct fan, make sure to use a wiring adapter for electrical appendices and link with the indoor unit fan
- The intake air flow rate is recommended to be 20% or less of the H speed air flow rate
If the intake air flow volume is too large, the operating sound may rise or detection of the indoor unit suction temperature may be affected.
- It indicates the distance between the T-tube inlet and the indoor unit inlet when the T-tube is connected

Applicable models
FCQG35/50/60/71F

