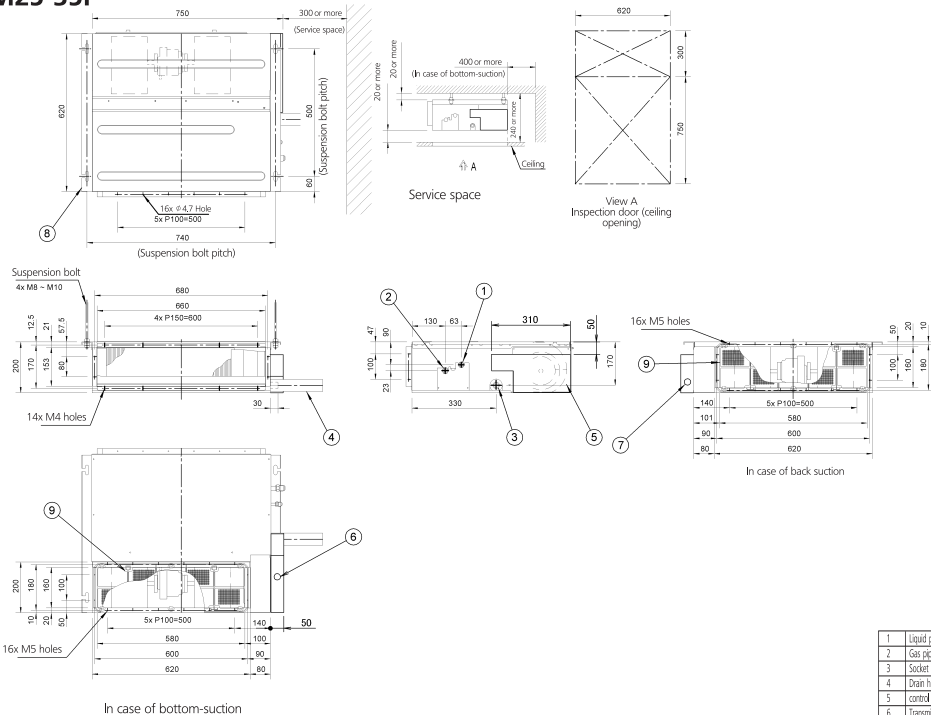


FDXM25-35F



Note:

- In case of back-suction, mount chamber cover to bottom side of the unit.
In case of bottom-suction, mount chamber cover to back side of the unit.
- Location of unit's name plate: control box cover.
- Mount the air filter at the suction side. (Use an air filter whose dust collecting efficiency is at least 50% in a gravimetric technique.) It can not be equipped with air filter (accessory) when connecting duct to suction side.

1	Liquid pipe connection	$\phi 6.4$ Flare connection
2	Gas pipe connection	$\phi 9.5$ Flare connection
3	Socket for drain	VP 20 (OD $\phi 26$, ID $\phi 20$)
4	Drain hose (accessory)	ID $\phi 25$ (Outlet)
5	Control box	
6	Transmission wiring	
7	Power supply connection	
8	Suspension bracket	
9	Air filter (accessory)	