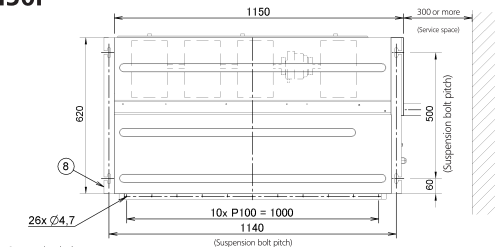
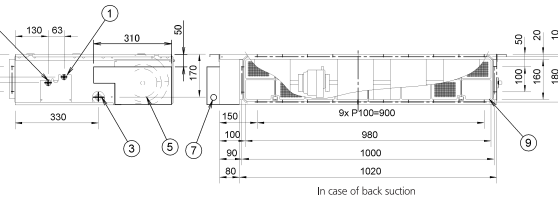
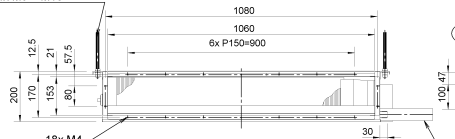
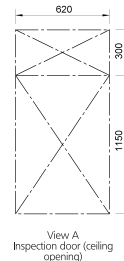
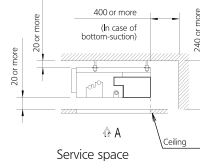


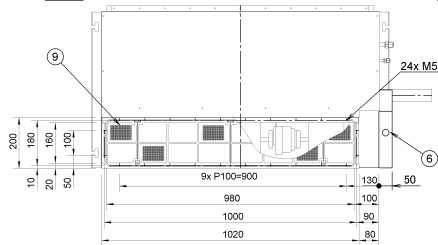
# FDXM50F



Suspension bolt  
4x M8 - M10



In case of back suction



In case of bottom-suction

1	Liquid pipe connection	$\varnothing$ 6,4 flare connection
2	Gas pipe connection	$\varnothing$ 12,7 flare connection
3	Socket for drain	VP 20 (OD $\varnothing$ 26, ID $\varnothing$ 20)
4	Drain hose (accessory)	ID $\varnothing$ 25 (Outlet)
5	control box	
6	Transmission wiring	
7	Power supply connection	
8	Suspension bracket	
9	Air filter (accessory)	

Note:

- In case of back-suction, mount chamber cover to bottom side of the unit.
- In case of bottom-suction, mount chamber cover to back side of the unit.
- Location of unit's name plate: control box cover.
- Mount the air filter at the suction side. (Use an air filter whose dust collecting efficiency is at least 50% in a gravimetric technique). It can not be equipped with air filter (accessory) when connecting duct to suction side.