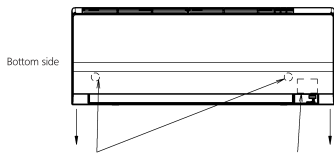
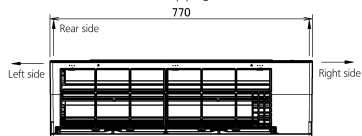


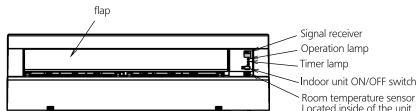
# FTX20-35KV

The mark (→) shows piping direction.



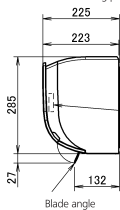
Front grille fixed screws  
Located inside of the unit

Nameplate  
Located inside of the unit



Signal receiver  
Operation lamp  
Timer lamp  
Indoor unit ON/OFF switch  
Room temperature sensor  
Located inside of the unit

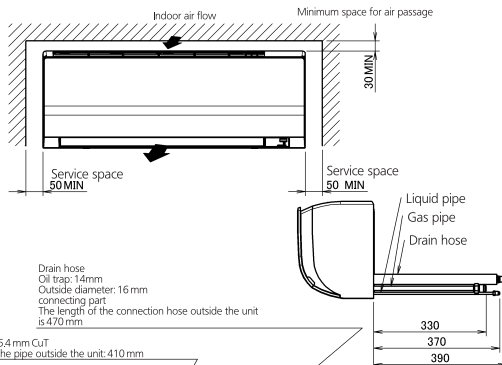
Include mounting plate



Terminal block with earth terminal  
Located inside of the unit

Blade angle

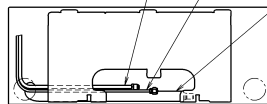
Required space for service and ventilation



Drain hose  
Oil trap: 14mm  
Outside diameter: 16 mm  
connecting part  
The length of the connection hose outside the unit is 470 mm

Liquid pipe  $\phi$  6.4 mm CuT  
The length of the pipe outside the unit: 410 mm

Gas pipe  $\phi$  9.5 mm CuT  
The length of the pipe outside the unit: 360 mm



Blade angle  
Up/down (automatic)

Cooling  
Dry



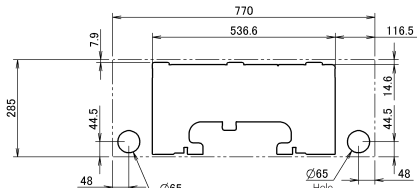
Heating



Fan

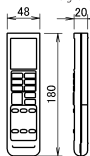


Left/right (manual)



Hole for embedded piping  
Standard location of holes in the wall

Signal transmitter



Infrared remote controller  
(ARC480A11)