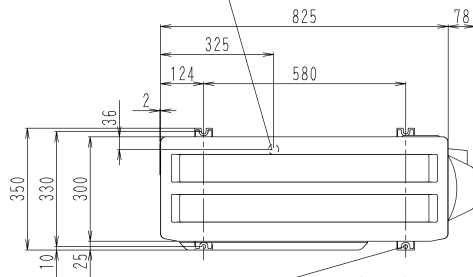
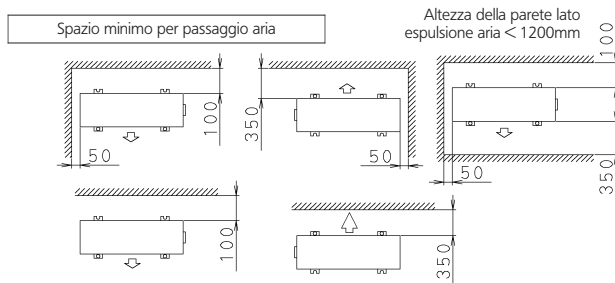
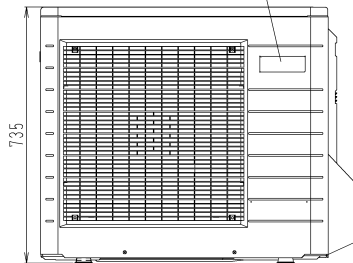
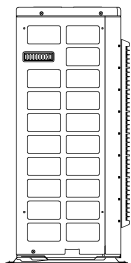


Uscita del drenaggio  
(flessibile di collegamento con diam.  
int.  $\phi$  15,9)



4 fori per viti d'ancoraggio  
(M8 o M10)

Targhetta di  
identificazione



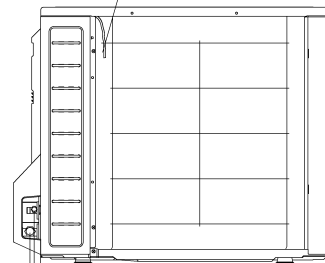
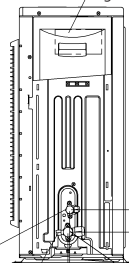
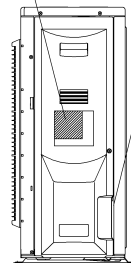
In caso di rimozione del coperchio delle  
valvole di intercettazione

Termistore temperatura aria  
esterna

Etichetta identificativa

Entrata dei cavi

Morsetteria con  
collegamento di terra



Valvola d'intercettazione  
sulla linea del liquido  
( $\phi$  6.4 CuT)

Attacco di servizio

Valvola di intercettazione del gas  
( $\phi$  12.7 CuT)