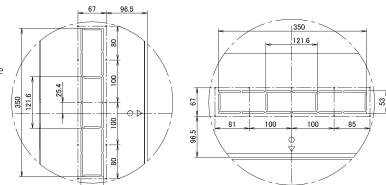
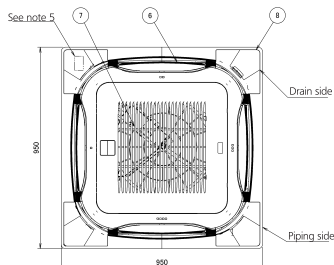
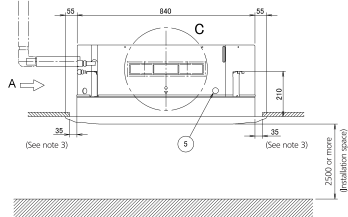
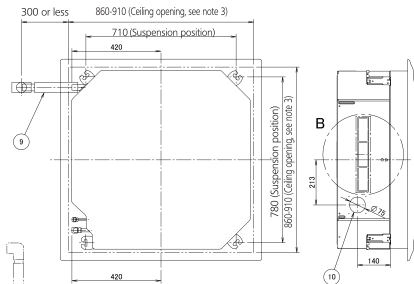


FXFQ20-63A

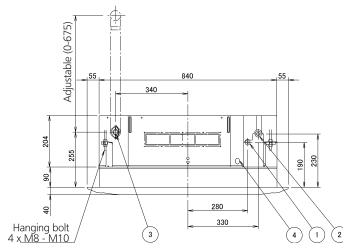
with auto-cleaning panel



Detail B
2 places opposite side

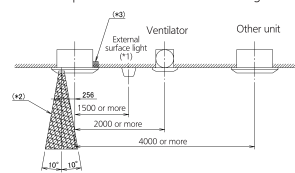
Detail C
2 places opposite side

- 1 Liquid pipe connection
- 2 Gas pipe connection
- 3 Drain pipe connection
- 4 Power supply entry hole
- 5 Transmission wiring entry hole
- 6 Air discharge opening
- 7 Air suction grille
- 8 Corner decoration cover
- 9 Drain hose
- 10 Knock out hole



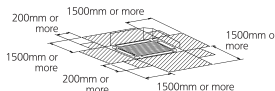
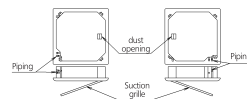
View A

Please respect the distances as shown on figure below.



- (*1) Does not count for build in light.
- (*2) Space needed to enter with vacuum-cleaner tube.
- (*3) Keep the exhaust of decoration panel free.

Installation direction



Required space

In case a discharge opening is closed with the 'sealing member' option, the distance of 1500mm can be reduced to 500mm on the closed side.

Model
FCQG35-71F, FXFQ20-63A

Notes:

1. Location of the nameplates:
 - Unit body: on the control box cover.
 - Decoration panel: on the panel frame at the piping side under the corner cover.
2. When installing an optional accessory, refer to the installation drawings.
 - For fresh air intake kit an inspection part is necessary.
3. Make sure the spacing between the ceiling and the cassette is no more than 35mm. MAX ceiling opening: 910mm.
4. When the conditions exceed 30°C and RH 80% in the ceiling or fresh air is inducted into the ceiling, an additional insulation is required (polyethylene foam, thickness 10 mm or more).
5. In case of using a sensor kit, this position will be a sensor, refer to the drawing of the sensor kit for more detail.