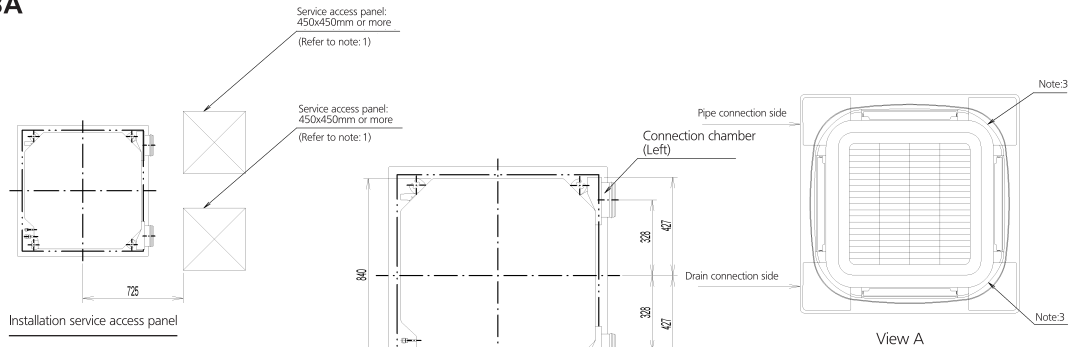
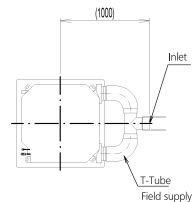
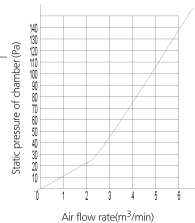


# FXFQ20-63A



**Note:**

1. When installing this kit, inspection hatch is necessary. (it is necessary when servicing.)  
Either one of inspection hatches must be installed.
2. Field construction.
3. The corner air outlet of this part must be shut.
4. In case of mounting a duct fan, make sure to use a wiring adapter for electrical appendices and link with the indoor unit fan.
5. The intake air flow rate is recommended to be 20% or less of the H speed air flow rate. If the intake air flow volume is too large, the operating sound may rise or detection of the indoor unit suction temperature may be affected.
6. It indicates the distance between the T-tube inlet and the indoor unit inlet when the T-tube is connected.



Applicable models
FXFQ20-63A