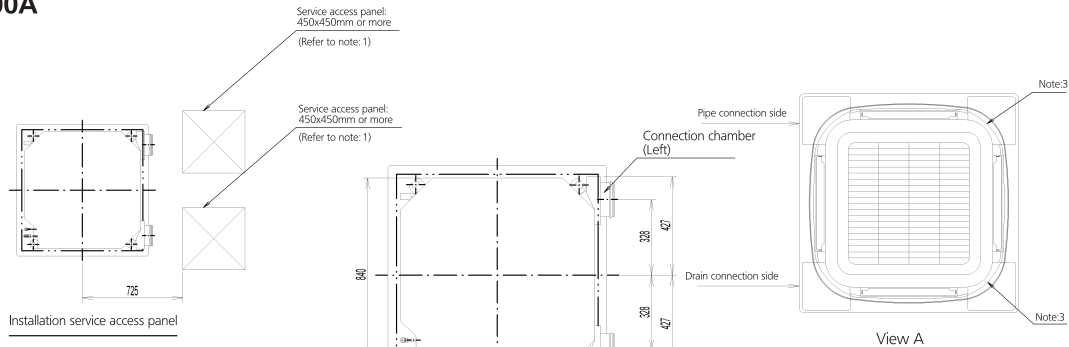
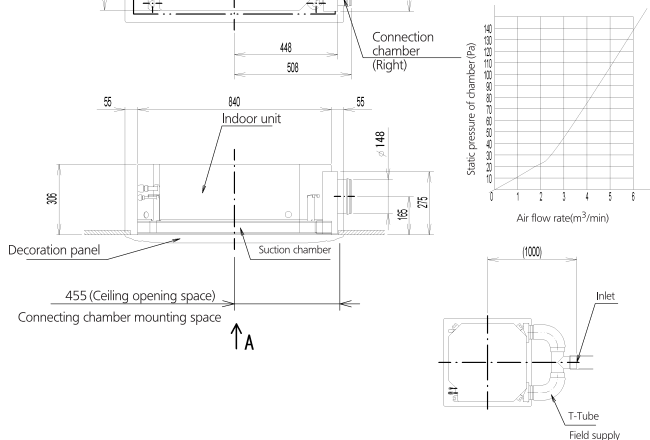


# FXFQ80-100A



## Note:

- When installing this kit, inspection hatch is necessary. (it is necessary when servicing.)  
Either one of inspection hatches must be installed.
- Field construction.
- The corner air outlet of this part must be shut.
- In case of mounting a duct fan, make sure to use a wiring adapter for electrical appendices and link with the indoor unit fan.
- The intake air flow rate is recommended to be 20% or less of the H speed air flow rate. If the intake air flow volume is too large, the operating sound may rise or detection of the indoor unit suction temperature may be affected.
- It indicates the distance between the T-tube inlet and the indoor unit inlet when the T-tube is connected.



Applicable models

FXFQ80-100A