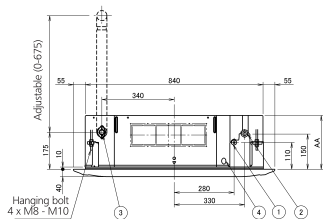
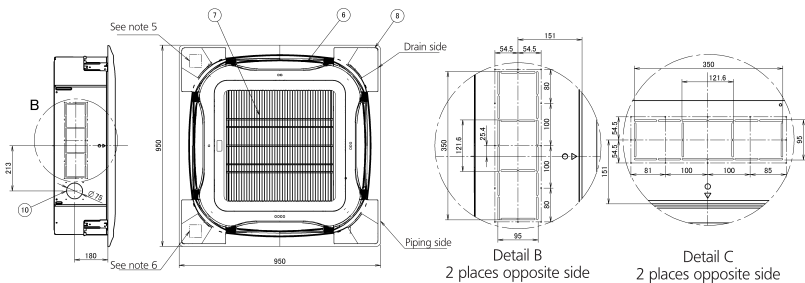
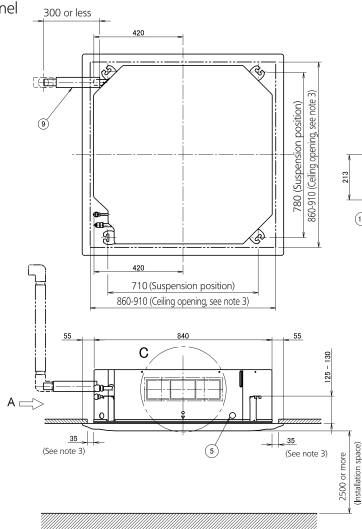


FXFQ80-125A

with standard panel



- 1 Liquid pipe connection
- 2 Gas pipe connection
- 3 Drain pipe connection
- 4 Power supply entry hole
- 5 Transmission wiring entry hole
- 6 Air discharge opening
- 7 Air suction grille
- 8 Corner decoration cover
- 9 Drain hose
- 10 Knock out hole

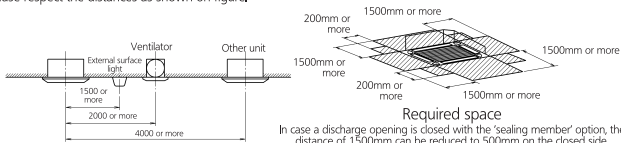
View A

Model	
246	FCQG100-140F, FXFQ80-100A
288	FCQH71-140F, FXFQ125A

Notes:

1. Location of the nameplates:
- Unit body: on the control box cover.
- Decoration panel: on the panel frame at the piping side under the corner cover.
2. When installing an optional accessory, refer to the installation drawings.
- For fresh air intake kit an inspection part is necessary.
3. Make sure the spacing between the ceiling and the cassette is no more than 35mm.
MAX ceiling opening: 910mm.
4. When the conditions exceed 30°C, and RH 80% in the ceiling or fresh air is induced into the ceiling, an additional insulation is required (polyethylene foam, thickness 10 mm or more).
5. In case of using a sensor kit, this position will be a sensor, refer to the drawing of the sensor kit for more detail.
6. In case of using an infrared controller, this position will be a receiver, refer to the drawing of the infrared controller for more detail.

Please respect the distances as shown on figure.



In case a discharge opening is closed with the 'sealing member' option, the distance of 1500mm can be reduced to 500mm on the closed side.