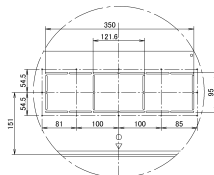
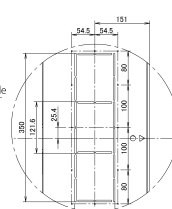
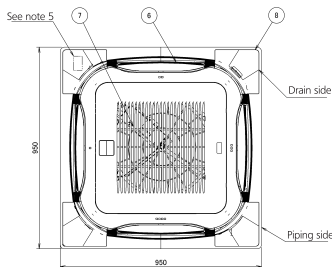
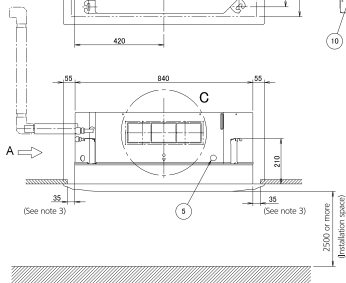
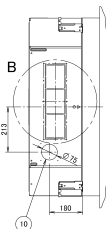
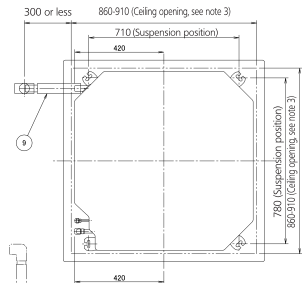


FXFQ80-125A

with auto-cleaning panel

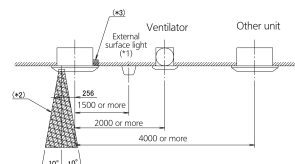


Detail B
2 places opposite side

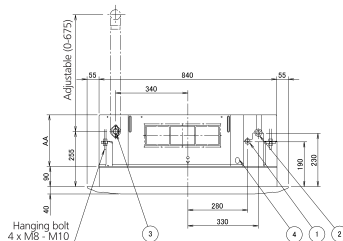
Detail C
2 places opposite side

- 1 Liquid pipe connection
- 2 Gas pipe connection
- 3 Drain pipe connection
- 4 Power supply entry hole
- 5 Transmission wiring entry hole
- 6 Air discharge opening
- 7 Air suction grille
- 8 Corner decoration cover
- 9 Drain hose
- 10 Knock out hole

Please respect the distances as shown on figure below.

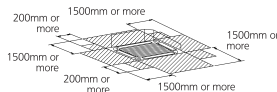
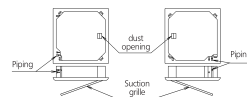


- (*1) Does not count for build in light.
- (*2) Space needed to enter with vacuum-cleaner tube.
- (*3) Keep the exhaust of decoration panel free.



View A

Installation direction



Required space

In case a discharge opening is closed with the 'sealing member' option, the distance of 1500mm can be reduced to 500mm on the closed side.

AA	Model
246	FCQG100-140F, FXFQ80-100A
288	FCQHG71-140F, FXFQ125A

Notes:

1. Location of the nameplates:
 - Unit body: on the control box cover.
 - Decoration panel: on the panel frame at the piping side under the corner cover.
2. When installing an optional accessory, refer to the installation drawings.
 - For fresh air intake kit an inspection part is necessary.
3. Make sure the spacing between the ceiling and the cassette is no more than 35mm. MAX ceiling opening 910mm.
4. When the conditions exceed 30°C and RH 80% in the ceiling or fresh air is inducted into the ceiling, an additional insulation is required (polyethylene foam, thickness 10 mm or more).
5. In case of using a sensor kit, this position will be a sensor, refer to the drawing of the sensor kit for more detail.