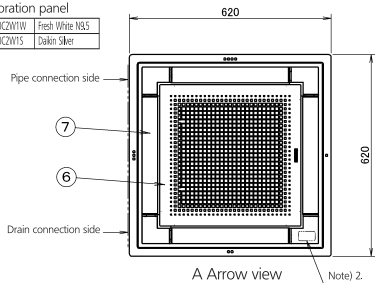


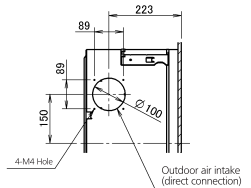
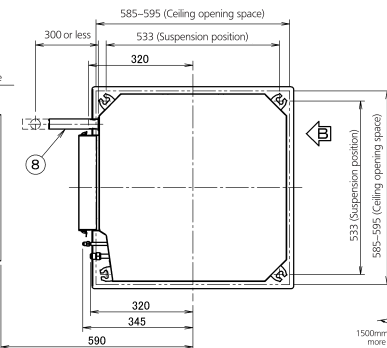
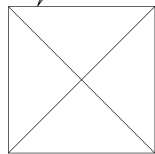
FXZQ-A

• Decoration panel

BYFQ6CZ1W	Fresh White NLS
BYFQ6CZ1S	Dark Silver

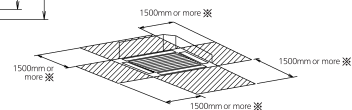


Service access panel
450 x 450mm or more

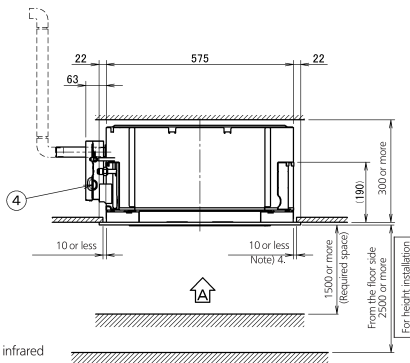
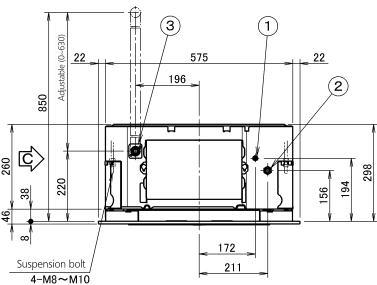
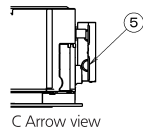


B Arrow view

• Required space



※ When the discharge grill is closed, the required space is 200mm or more



1	Liquid pipe connection	φ 6.4 Flare connection
2	Gas pipe connection	φ 12.7 Flare connection
3	Drain pipe connection	VP20 (I.D. φ 26)
4	Power supply connection	
5	Remote control code and control wiring connection	
6	Air discharge grille	
7	Suction grill	
8	Drain hose (accessory)	I.D. φ 25 (Outlet)

Note:

1. Sticking location for manufacturer's label
 Manufacturer's label for indoor unit: on the bell mouth inside suction grille.
 Manufacturer's label for decoration panel: on the inner frame inside suction grille.
2. In case of using infrared remote controller, this position will be a signal receiver. Refer to the drawing of infrared remote controller in detail.
3. When the temperature and humidity in the ceiling exceed 30°C and RH 80% or the fresh air is inducted into the ceiling or the unit continues 24 hour operation, an additional insulation (thickness 10mm or more glasswool or polyethylene form) is required.
4. Though the installation is acceptable up to maximum of 595mm square ceiling opening. Keep the clearance of 10mm or less between the main unit and the ceiling opening so that the panel overlap allowance can be ensured.