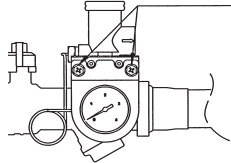
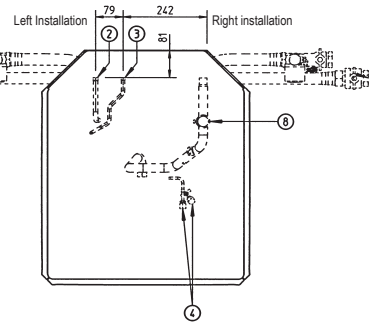
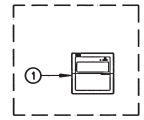


# HXHD-A

**Detail A**  
Scale 1/3



If required (e.g. Wall fixation)  
Pressure gauge can be removed from waterfilter, maximum distance  
between waterfilter and pressure gauge ± 600 mm



|    |                                                                                      |
|----|--------------------------------------------------------------------------------------|
| 1  | Remote control (delivered as accessory)<br>Installation location is outside the unit |
| 2  | Discharge pipe connection $\varnothing 12.7$ solder (R410a)                          |
| 3  | Liquid pipe connection $\varnothing 9.5$ solder (R410a)                              |
| 4  | R134a Service ports 5/16" flare (2x)                                                 |
| 5  | Pressure gauge                                                                       |
| 6  | Blow off valve                                                                       |
| 7  | Drain valve water circuit                                                            |
| 8  | Air purge                                                                            |
| 9  | Shut-off valves (2x)                                                                 |
| 10 | Water filter                                                                         |
| 11 | Water in connection G 1° (female)                                                    |
| 12 | Water out connection G 1° (female)                                                   |
| 13 | Control wiring intake (knock-out hole $\varnothing 37$ )                             |
| 14 | Power supply wiring intake (knock-out hole $\varnothing 37$ )                        |
| 15 | Knock-out holes for refrigerant piping and water piping                              |
| 16 | Levelling feet                                                                       |
| 17 | Discharge stop valve $\varnothing 12.7$ solder (R410a)                               |
| 18 | Liquid stop valve $\varnothing 9.5$ solder (R410a)                                   |

