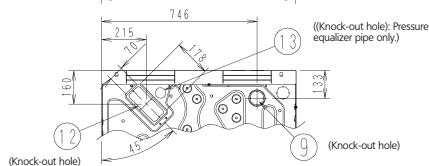
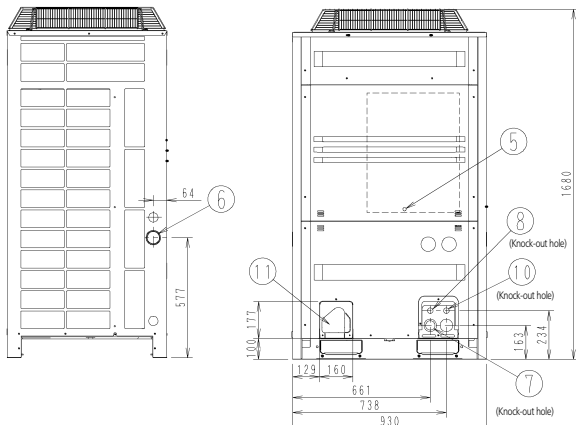
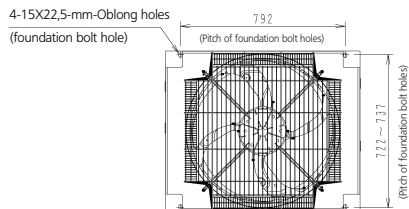
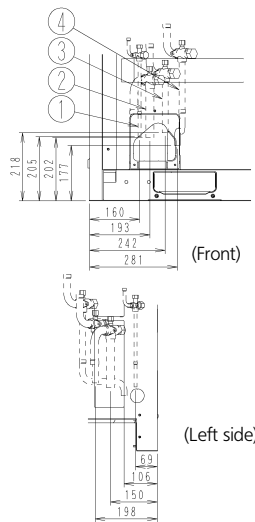


REM-Q8,12P9 REM-Q10P8



Notes

- 1 For piping connection method (front and bottom sides) see the installation manual.
- 2 Suction gas pipe
 ϕ 22.2 Brazing connection... REM-Q8P9, REM-Q10P8
 ϕ 28.6 Brazing connection... REM-Q12P9
 Liquid pipe
 ϕ 9.5 Brazing connection... REM-Q8P9, REM-Q10P8
 ϕ 12.7 Brazing connection... REM-Q12P9
- 3 Piping connection diameter for field connection.



- 1 Liquid pipe connection port see note 2.3.
- 2 Suction gas pipe connection port see note 2.3.
- 3 High and low pressure gas pipe connection port ϕ 19.1 Brazing connection see note 3.
- 4 Pressure equalizer pipe connection port ϕ 19.1 Brazing connection see note 3.
- 5 Grounding terminal inside of switch box (MB)
- 6 Power cord routing hole (side) ϕ 62
- 7 Power cord routing hole (front) ϕ 45
- 8 Power cord routing hole (front) ϕ 27
- 9 Power cord routing hole (bottom) ϕ 65.5
- 10 Wire routing hole (front) ϕ 27
- 11 Pipe routing hole (front) see note 1.
- 12 Pipe routing hole (bottom) see note 1.
- 13 Pipe routing hole (bottom) ϕ 50 see note 1.