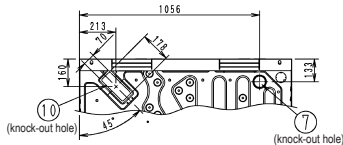
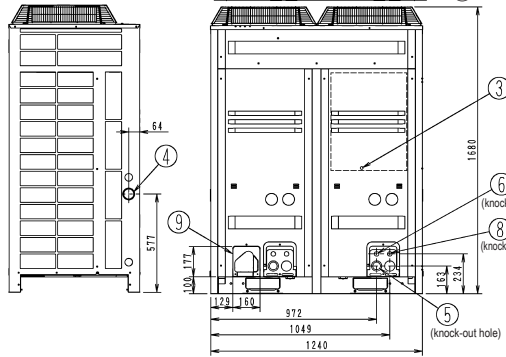
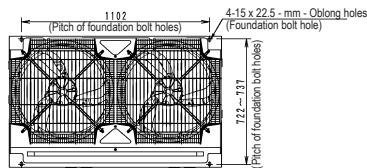
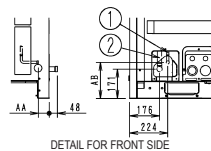


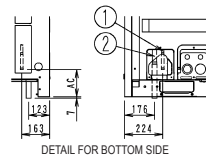
# RXYQ14,16,18P



AA	Model name	AB	Model name	AC	Model name
83	RXYQ12-14-16P	209	RXYQ12P	175	RXYQ12P
63	RXYQ18P	211	RXYQ14-16-18P	179	RXYQ14-16P
				160	RXYQ18P



DETAIL FOR FRONT SIDE



DETAIL FOR BOTTOM SIDE

3D051450K

No.	Parts name	Remarks
1	Liquid pipe connection port	See note 2.
2	Gas pipe connection port	See note 2.
3	Grounding terminal	Inside of switch box (M8)
4	Power cord routing hole (side)	ø62
5	Power cord routing hole (front)	ø45
6	Power cord routing hole (front)	ø27
7	Power cord routing hole (bottom)	ø65.5
8	Wire routing hole (front)	ø27
9	Pipe routing hole (front)	
10	Pipe routing hole (bottom)	

## NOTES

- Detail for front side and detail for bottom side indicate the dimensions after fixing the attached piping.
- Gas pipe [Heat pump type]  
 ø28.6 Brazing connection 14-16P type  
 ø22.2 Brazing connection 10P type  
 Liquid pipe [Heat pump type]  
 ø15.9 Brazing connection 18P type  
 ø12.7 Brazing connection 14-16P type  
 ø9.5 Brazing connection 10P type