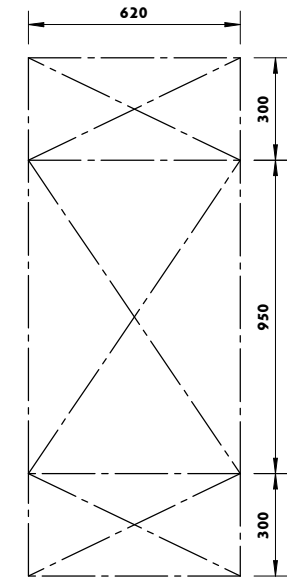
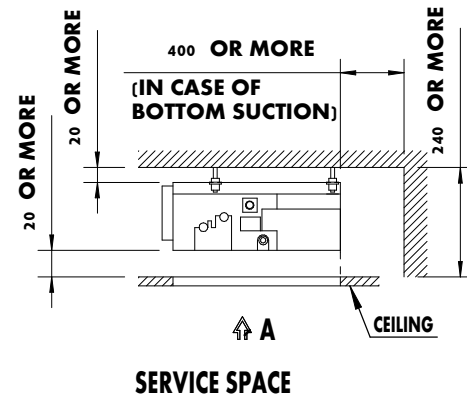
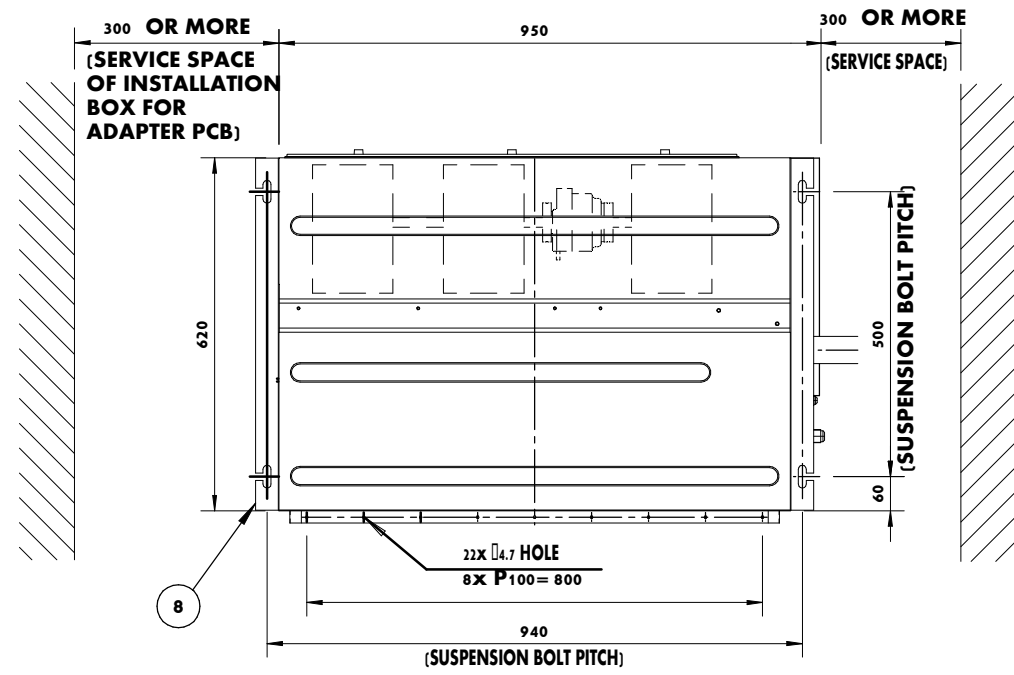
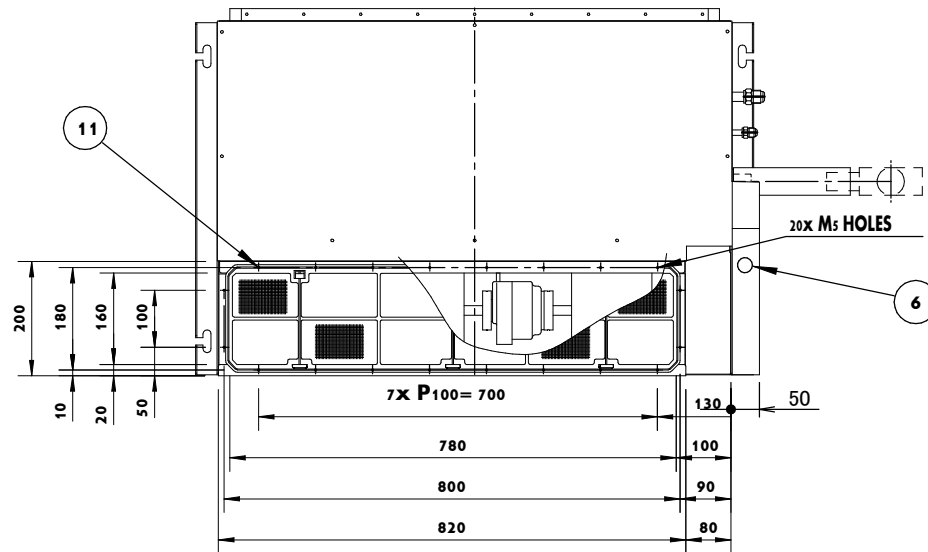
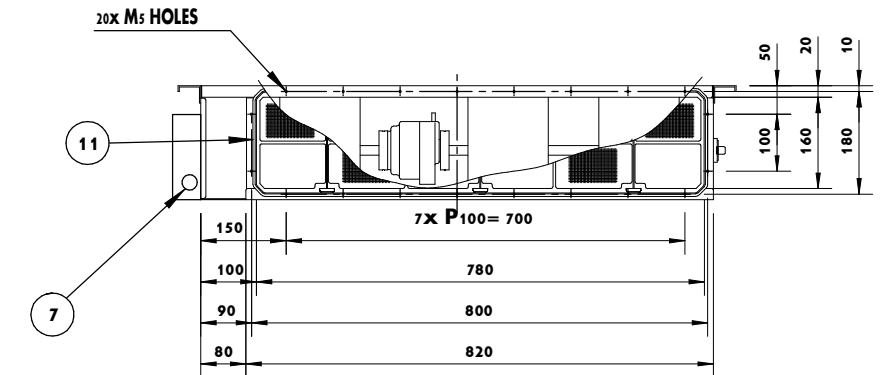
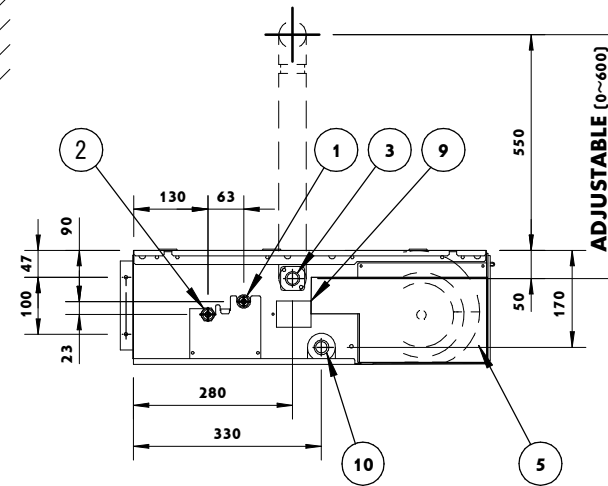
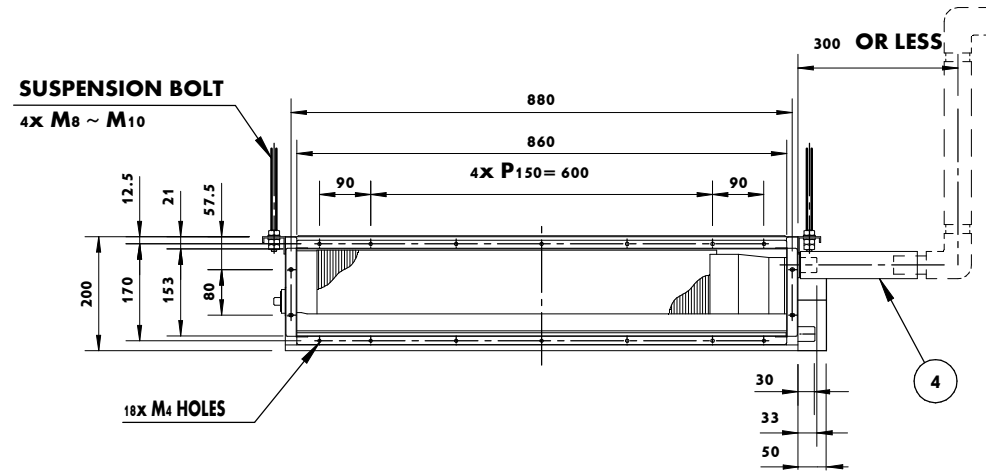


# FXDQ40-50A3



VIEW A  
INSPECTION DOOR  
(CEILING OPENING)



IN CASE OF BOTTOM SUCTION

## NOTES : IN CASE OF BACK SUCTION

- IN CASE OF BACK SUCTION, MOUNT CHAMBER COVER TO BOTTOM SIDE OF THE UNIT. IN CASE OF BOTTOM SUCTION, MOUNT CHAMBER COVER TO BACK SIDE OF THE UNIT.
- LOCATION OF UNIT NAME PLATE: CONTROL BOX COVER.
- MOUNT THE AIR FILTER AT THE SUCTION SIDE. (USE AN AIR FILTER WHOSE DUST COLLECTING EFFICIENCY IS AT LEAST 50% IN A GRAVIMETRIC TECHNIQUE). IT CAN NOT BE EQUIPPED WITH AIR FILTER (ACCESSORY) WHEN CONNECTING DUCT TO SUCTION SIDE

ITEM	NAME	DESCRIPTION
1	LIQUID PIPE CONNECTION	Dia.6.4 FLARE CONNECTION
2	GAS PIPE CONNECTION	Dia.12.7 FLARE CONNECTION
3	DRAIN PIPE CONNECTION	VP20 (OD Dia.26, ID Dia.20)
4	DRAIN HOSE (ACCESSORY)	ID Dia.25 (OUTLET)
5	CONTROL BOX	.
6	TRANSMISSION WIRING CONNECTION	.
7	POWER SUPPLY CONNECTION	.
8	SUSPENSION BRACKET	.
9	INSPECTION COVER	.
10	SOCKET FOR DRAIN	.
11	AIR FILTER (ACCESSORY)	.