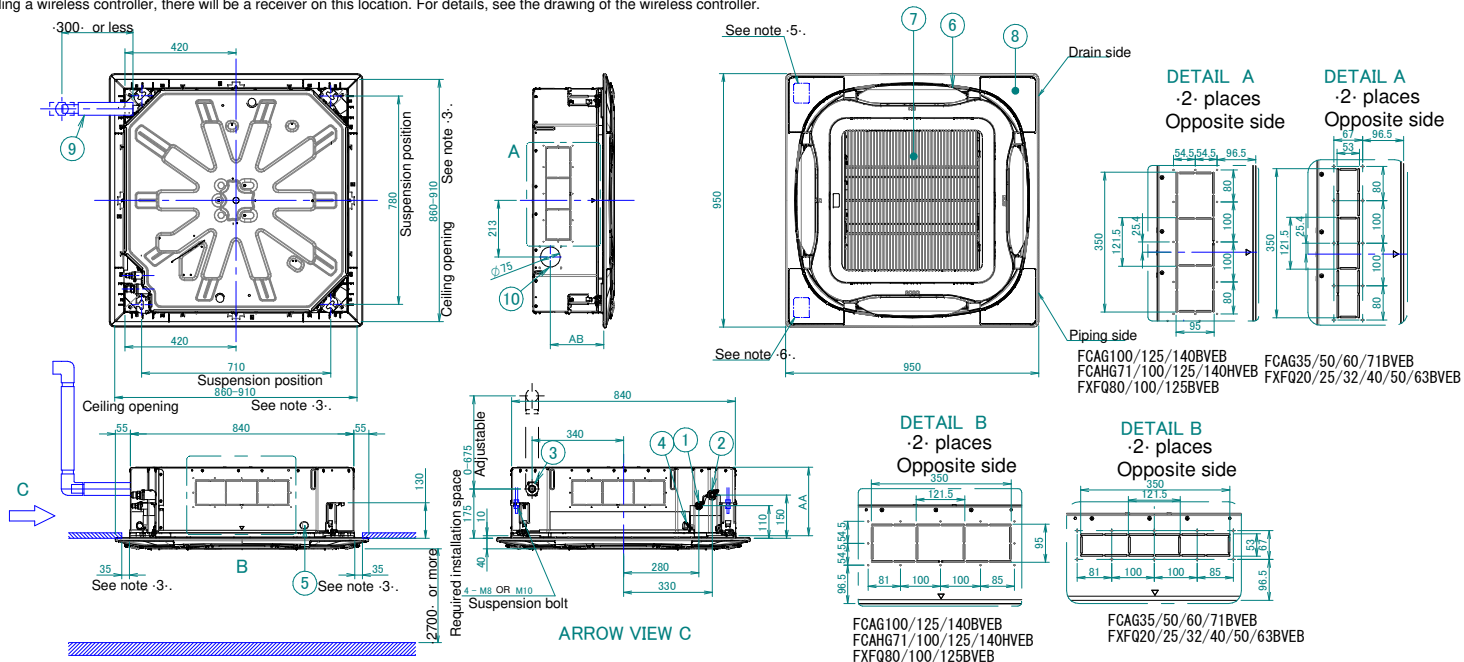


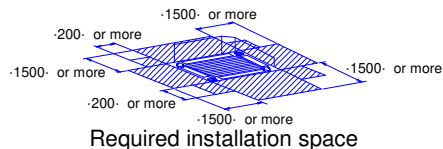
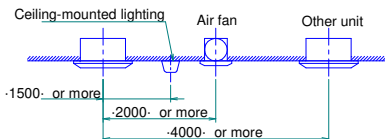
FXFQ-B

Notes

- Location of nameplate
The unit nameplate is located on the control box cover.
The decoration panel nameplate is located on the piping-side panel frame, under the corner cover.
- When installing optional accessories, refer to their respective documentation.
- Make sure the distance between the ceiling and the cassette does not exceed -35-mm.
The maximum ceiling opening is -910-mm.
- When the conditions in the ceiling exceed 30°C ambient temperature and 80% relative humidity, or when fresh air is inducted into the ceiling, additional insulation is required (polyethylene foam, thickness ≥10-mm).
- When installing a sensor kit, there will be a sensor on this location. For details, see the drawing of the sensor kit.
- When installing a wireless controller, there will be a receiver on this location. For details, see the drawing of the wireless controller.



Respect the distances shown on the figure.



If a discharge outlet is closed up with the "sealing member" option kit, then the required installation space on that (closed up) side is -500-mm instead of -1500-mm.

Item Name

- Liquid pipe connection port
- Gas pipe connection port
- Drain pipe connection
- Power supply wiring intake
- Transmission wiring intake hole
- Air discharge outlet
- Air suction grille
- Corner decoration cover
- Drain hose
- Knockout hole.