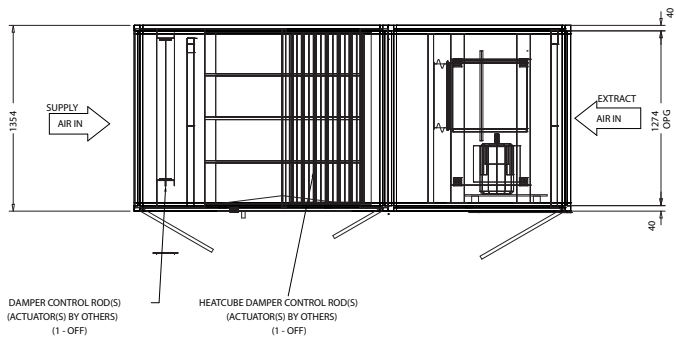
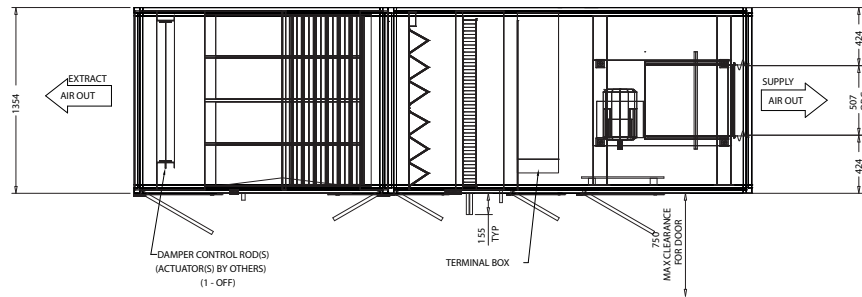


550 LIFTING HOLES (4 PER SECTION)
 ALL LIFTING POLES MUST BE TESTED & CERTIFIED
 & A METHOD OF RETAINING THE SLINGS MUST BE
 USED, e.g. FIXED END PLATES.
 (ALL LIFTING EQUIPMENT IS SUPPLIED BY OTHERS)



TECHNICAL SPECIFICATION		
ITEM	DESCRIPTION	DETAILS
9	FLEXIBLE CONNECTION	MATERIAL - PVC COATED POLYESTER FABRIC CONFORMS TO DIN 24194
10	AVM'S	TYPE SPRING No REQUIRED 4 PER FAN
11	FINISH	FRAMES - ANODISED ALUMINIUM ALLOY PANELS OUTER SKIN - GREY, PLASTISOL PANELS INNER SKIN - GALVANIZED
12	INSULATION	ALL PANELS DOUBLE SKINNED 25 mm THICK
13	GENERAL NOTES	<p>a) FULL UNIT WIDTH CLEARANCE REQ'D FOR FAN & COIL REMOVAL.</p> <p>b) CLEARANCE REQUIRED AT ACCESS SIDE OF FILTER SECTION FOR FILTER REMOVAL SEE PLAN VIEW.</p> <p>c) CARE MUST BE TAKEN WHEN PIPING-UP TO ENSURE THAT NO WEIGHT IS PLACED UPON THE COIL CONNECTIONS.</p> <p>d) NO LOADS FROM CLIENTS DUCTWORK TO BE IMPOSED ON UNIT</p> <p>e) ALL QUOTED FAN VOLUMES & NOISE LEVELS ARE PROVIDED IN ACCORDANCE WITH RELEVANT FAN MANUFACTURES STANDARDS AND ARE SUBJECT TO INDUSTRIAL ACCEPTED TOLERANCES</p> <p>f) INLET AND OUTLET FLANGES UNDRILLED FOR RECOMMENDED DUCTWORK FIXING DETAILS SEE DRAWING No. A2-920685</p> <p>g) CABLE PENETRATIONS SHOULD BE VIA HOLES CUT IN THE PANELS & MUST BE SEALED WITH A SUITABLE MASTIC AFTER THE CABLE HAS BEEN CLIPPED AND GLANDED.</p> <p>h) ALL GALVANISED/STAINLESS STEEL, PLASTISOL & ALUMINIUM USED IN THE CONSTRUCTION OF THESE UNITS IS PURCHASED AND IN LINE WITH THE RELEVANT BRITISH & EUROPEAN STANDARDS.</p> <p>i) INSERTION LOSSES ARE DERIVED FROM STATIC TESTS CARRIED OUT IN ACCORDANCE WITH BS4718:1971. EFFECTIVE INSERTION LOSS IN AHU APPLICATION WILL BE AFFECTED BY AIRFLOW CONDITIONS/NOISE REGENERATION AND COMPONENT LOSSES. THE DATA SHOULD NOT BE ARITHMETICALLY SUBTRACTED FROM THE FAN L_w TO OBTAIN THE INLET & OUTLET LEVELS. REFERENCE MUST BE MADE TO DRAIN.</p> <p>j) ESTIMATED SHIPPING WEIGHT = 1220 kg</p>

SECTIONS		
NO	LENGTH	WEIGHT
1	1850 mm	420 kg
2	2650 mm	500 kg
3	1330 mm	300 kg

WEATHERPROOF CONSTRUCTION

TECHNICAL SPECIFICATION		
ITEM	DESCRIPTION	DETAILS
1	FLATBANK FILTER	SIDE ACCESS PART NO W X H OFF Perfect Pleat 4531001224 610X305 G4 ARRESTANCE 90-95% 4531002424 610X610 2 NO SPARE SET
2	HEATCUBE	SIZE= 800 CODE= RXL-800.810 B25.0 HSI WINTER CONDITIONS SUPPLY AIR ON = -5.0 °C SUPPLY AIR OFF = 7.8 °C EXHAUST AIR ON = 22.0 °C HEAT RECOVERY = 39.0 kW EFFICIENCY(%) = 47.2 SUMMER CONDITIONS SUPPLY AIR ON = 32.0 °C SUPPLY AIR OFF = 27.5 °C EXHAUST AIR ON = 22.0 °C HEAT RECOVERY = 14.0 kW EFFICIENCY(%) = 45.3 MATERIALS OF CONSTRUCTION= STANDARD BYPASS= TRUE DRAIN PAN= STANDARD SLOPING - POLYPROPYLENE DRAIN CONNECTION SIZE(BSP)= 1"
3	BAG FILTER	SIDE ACCESS PART NO W X H OFF M-Pak F6 2761100002 610X305 2 EFFICIENCY 60-65% 2761100015 610X610 2 NO SPARE SET
4	DX COIL	MODEL= 1022A3602108090EXX12 ROWS= 2 FINS= AI TUBES= COPPER CONNECTIONS SUPPLY(mm)= 16 RETURN(mm)= 42 TOTAL CAPACITY(kW)= 21.82 ENTERING AIR('CDB)= 27.50 °CWB= 20.76 LEAVING AIR('CDB)= 22.00 °CWB= 18.61 REFRIGERANT= R410A SUCTION TEMP 6.00 °C No OF CIRCUITS 1 INTERLACED HOT GAS BY PASS= N/A CONNECTION TYPE= PLAIN INLET GUARDS= N/A BINDERTAPPING POINTS= N/A DRAIN CONNECTION(BSP)= 1" DRAIN PAN= Standard Sloping - Polypropylene CASING= Galv NOTE=
5	ELECTRIC COIL	ELECTRICAL SUPPLY 415/240v TOTAL CAPACITY 82.50 kW STAGES 1 ENTERING AIR('C)= -5.00 LEAVING AIR('C)= 20.00 ELEMENT SHEATHED WITH HIGH TEMPERATURE MANUAL RESET CUTOUT NOTE=
6	FAN SUPPLY	FAN MODEL= NTHZ 400 R IMPELLER TYPE= BC AIR FLOW (m ³ /s)= 2.54 ESP(Pa)= 250 FSP(Pa)= 808 SPEED (rpm)= 1879 ABS. POWER (kW)= 2.80 FREQUENCY (Hz) 63 125 250 500 1k 2k 4k 8k SOUND POWER LEVEL (dB) 95 83 91 81 79 75 69 62 VOLUME CONTROL= N/A FINISH= STANDARD SHAFT GUARDS= N/A INSPECTION DOOR= N/A INLET GUARDS= N/A STAINLESS STEEL SHAFT= N/A DRAIN PLUG= N/A SPARK MINIMISING FEATURES= N/A
	DRIVE MOTOR	RATING (kW)= 4.00 TYPE= 112M EFF1 FL SPEED (rpm)= 1460 SUPPLY= 400V/50Hz FULL LOAD CURRENT(amps)= 7.81 WINDING TYPE= SINGLE STARTING CURRENT(amps)= 56.23 STARTING METHOD= DOL THERMISTER FITTED= N/A EPOXY PAINT FINISH= N/A SPARE DRIVE BELTS (SET(S))= 0
7	FLATBANK FILTER	SIDE ACCESS PART NO W X H OFF Perfect Pleat 4531001224 610X305 2 ARRESTANCE 90-95% 4531002424 610X610 2 NO SPARE SET
8	FAN RETURN	FAN MODEL= TLZ 400 R IMPELLER TYPE= FC AIR FLOW (m ³ /s)= 2.54 ESP(Pa)= 250 FSP(Pa)= 594 SPEED (rpm)= 988 ABS. POWER (kW)= 2.51 FREQUENCY (Hz) 63 125 250 500 1k 2k 4k 8k SOUND POWER LEVEL (dB) 73 73 73 79 78 76 75 69 VOLUME CONTROL= N/A FINISH= STANDARD SHAFT GUARDS= N/A INSPECTION DOOR= N/A INLET GUARDS= N/A STAINLESS STEEL SHAFT= N/A DRAIN PLUG= N/A SPARK MINIMISING FEATURES= N/A
	DRIVE MOTOR	RATING (kW)= 4.00 TYPE= 112M EFF1 FL SPEED (rpm)= 1460 SUPPLY= 380V/50Hz FULL LOAD CURRENT(amps)= 7.81 WINDING TYPE= SINGLE STARTING CURRENT(amps)= 56.23 STARTING METHOD= DOL THERMISTER FITTED= N/A EPOXY PAINT FINISH= N/A SPARE DRIVE BELTS (SET(S))= 0